



MORNING December 7, 2020 Livestock Report

by Chris Lehner | 312.242.7942 | chris.lehner@admis.com

CATTLE

USDA FEDERAL CATTLE SLAUGHTER

DECEMBER 04, 2020	117,000	
WEEK AGO	115,000	
YEAR AGO	122,000	
SATURDAY 12/05/2020	69,000-	A WEEK AGO 88,000, YEAR AGO 80,000
WEEK TO DATE (EST)	667,000	
SAME PERIOD LAST WEEK (EST)	564,000	
SAME PERIOD LAST YEAR (ACT)	682,000	
2020 YEAR TO DATE	29,962,000	
*YEAR TO DATE	31,031,000	
Percent change year to date	-3.4%	Previous week -3.5%

=====

	CHOICE	SELECT
BOXED BEEF FINAL	235.02	217.51
CHANGE FROM PRIOR DAY	(4.17)	(2.42)
CHOICE/SELECT SPREAD:		17.51
TOTAL LOAD COUNT		132
5 DAY SIMPLE AVERAGE:	242.00	221.82

	CHOICE	SELECT
NOVEMBER 27,2020		
BOXED BEEF FINAL	242.85	220.68

=====

Based on negotiated prices and volume of boxed beef cuts delivered within 0-21 days and on average industry cutting yields. Values reflect U.S. dollars per 100 pounds

FINAL DECEMBER 04, 2020

Primal Rib	514.23	403.47
Primal Chuck	190.03	186.85
Primal Round	184.78	182.51
Primal Loin	275.70	261.45
Primal Brisket	151.43	140.76
Primal Short Plate	130.14	130.14



Primal Flank 105.07 108.57

**PREVIOUS WEEK CLOSING PRICES
FINAL NOVEMBER 27, 2020**

Primal Rib	483.50	379.84
Primal Chuck	205.92	197.38
Primal Round	196.83	196.05
Primal Loin	292.89	257.11
Primal Brisket	158.71	159.23
Primal Short Plate	127.66	127.66
Primal Flank	108.05	106.09

LOAD COUNT AND CUTOFF VALUE SUMMARY FOR PRIOR 5 DAYS

Date	Choice	Select	Trim	Grinds	Total	CHOICE	SELECT
						600-900	600-900
12/03	131	15	20	22	189	239.19	219.93
12/02	74	12	18	19	123	240.89	222.95
12/01	78	13	11	27	130	243.40	223.08
11/30	53	12	12	7	84	243.68	222.43
11/27	30	7	8	7	51	242.85	220.68

NATIONAL BOXED BEEF CUTS - NEGOTIATED SALES FOB Plant basis negotiated sales for delivery within 0-21-day period. Prior days sales after 1:30pm are included.
CURRENT VOLUME - (one load equals 40,000 pounds)

Choice Cuts	81.05 loads	3,242,099 pounds
Select Cuts	19.13 loads	765,320 pounds
Trimming	15.06 loads	602,436 pounds
Ground Beef	16.34 loads	653,606 pounds

USDA BY-PRODUCT DROP VALUE (STEER) FOB CENTRAL U.S.
[HTTPS://WWW.AMS.USDA.GOV/MNREPORTS/NW_LS441.TXT](https://www.ams.usda.gov/mnreports/nw_ls441.txt)

DECEMBER 2020 USDA LIVESTOCK REPORTS

USDA CATTLE ON FEED – FRIDAY DECEMBER 18, 2020 2:00PM CENTRAL TIME
USDA COLD STORAGE – TUESDAY DECEMBER 22, 2020 2:00PM CENTRAL TIME
USDA QUARTERLY HOGS AND PIGS– WEDNESDAY DECEMBER 23, 2020 2:00PM CENTRAL TIME



USDA POSTED CATTLE PRICES ON 12/04/2020

IA/MN – CASH - 109.75 Dressed.- 170.00
 NE - CASH – 110.00 Dressed.- No Reportable Trade.
 KS – CASH No Reportable Trade. Dressed - No Reportable Trade.
 TX/OK/NM – 109.00
 CO – Information not available due to confidentiality

*****National Daily Direct Cattle 12/04/2020
 (5 day accumulated weighted avg)**

	Weight	Price	Head
Live Steer:	1495	\$109.89	43,858
Live Heifer:	1326	\$110.17	23,401
Dressed Steer:	982	\$172.46	12,811
Dressed Heifer:	875	\$172.85	5,012

=====
 Choice Boxed beef was down \$7.83 for the week. There are too many overweight cattle and big heavy cuts such as chucks, and rounds are putting out too much beef. Going forward northern and Midwestern feedlots MUST reduce weights. Heavy cattle equal too much meat. . Cattle slaughter last week was 667,000 head and at 21 pounds per dressed steer and heifer over a year ago it puts an extra 14,007,000 pounds or 350 truckloads for the week. Pretty easy to see why feedlots need to move the heavy cattle as soon as they can.
 =====

With the cheap US Dollar, US beef should be flying out the door. However, trade agreements insure countries will buy from each other quotas set in the agreements. Brazil and Mercosur over the past couple of years have made new trade agreements with one time US customers and continue to open new doors and widening existing agreements. At one time the US was the top rung of the ladder, but no more. Before it falls to bottom, the US cattle industry has to change.

=====
As of December 1, 2020, dressed steer and heifer weights were 896.5 compared to previous week at 898.5 down 2 pounds from week ago and 21 pounds over a year ago compared to a week ago up 24 pounds. Grading percent was 81.9%, down compared to previous week at 82.6 %.



FEBRUARY 2021 LIVE CATTLE/APRIL 2021 LIVE CATTLE SPREAD -



DECEMBER 2020 LIVE CATTLE -

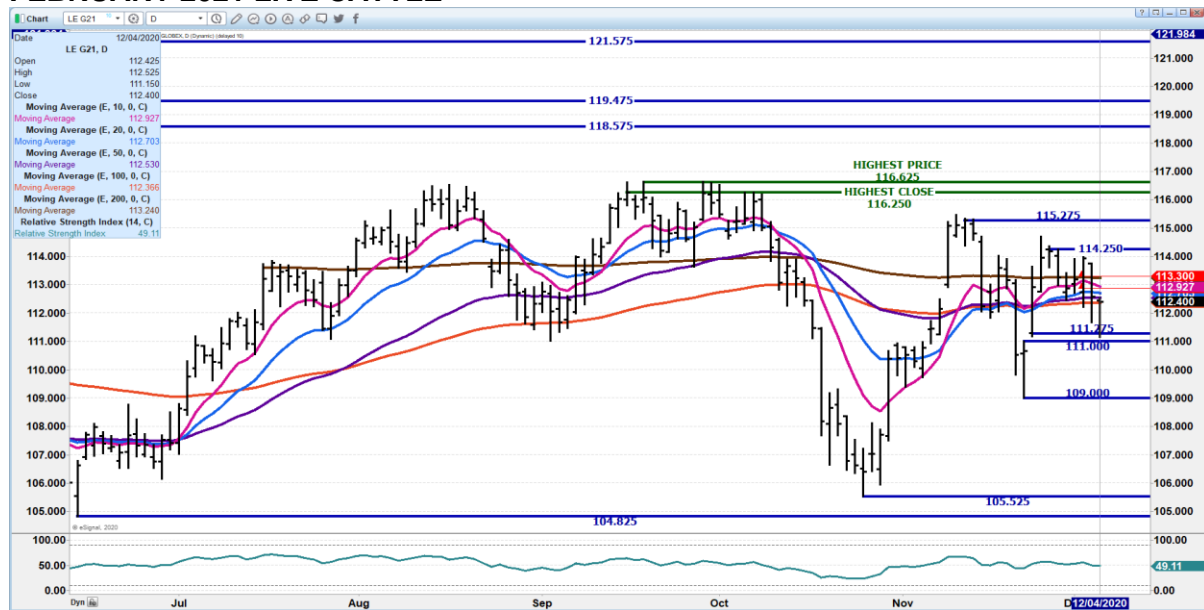


ADMIS.com | 312.242.7000 | Chicago | New York | London | Hong Kong | Singapore | Taipei | Shanghai

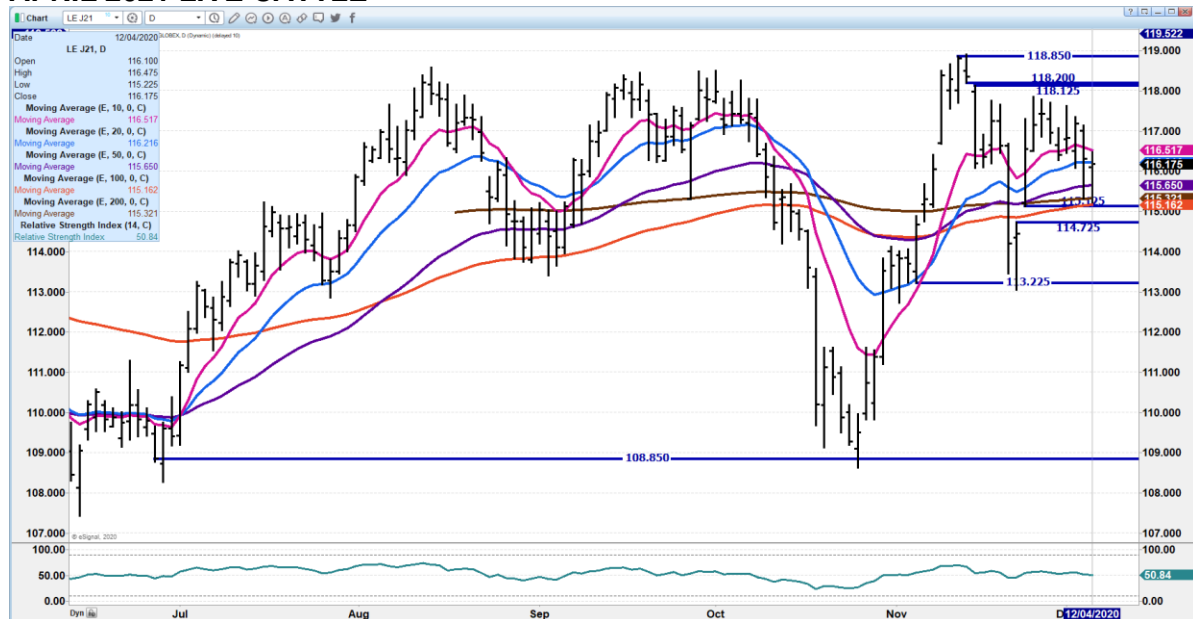
The information and comments contained herein is provided by ADM Investor Services, Inc. ("ADMIS") and NOT ADM. Futures and options trading involve significant risk of loss and may not be suitable for everyone. Therefore, carefully consider whether such trading is suitable for you in light of your financial condition. This report includes information from sources believed to be reliable and accurate as of the date of this publication, but no independent verification has been made and we do not guarantee its accuracy or completeness. Research analyst does not currently maintain positions or have financial interest in the commodities specified within this report. Any reproduction or retransmission of this report without the express written consent of ADM Investor Services, Inc. is strictly prohibited. Again, the information and comments contained herein is provided by ADMIS and in no way should be construed to be information provided by ADM. Copyright © ADM Investor Services, Inc.



FEBRUARY 2021 LIVE CATTLE -



APRIL 2021 LIVE CATTLE -



ADMIS.com | 312.242.7000 | Chicago | New York | London | Hong Kong | Singapore | Taipei | Shanghai

The information and comments contained herein is provided by ADM Investor Services, Inc. ("ADMIS") and NOT ADM. Futures and options trading involve significant risk of loss and may not be suitable for everyone. Therefore, carefully consider whether such trading is suitable for you in light of your financial condition. This report includes information from sources believed to be reliable and accurate as of the date of this publication, but no independent verification has been made and we do not guarantee its accuracy or completeness. Research analyst does not currently maintain positions or have financial interest in the commodities specified within this report. Any reproduction or retransmission of this report without the express written consent of ADM Investor Services, Inc. is strictly prohibited. Again, the information and comments contained herein is provided by ADMIS and in no way should be construed to be information provided by ADM. Copyright © ADM Investor Services, Inc.



Feeder Cattle

THE CME FEEDER INDEX ON 12/03/2020 WAS 139.18 DOWN 26 CENTS FROM PREVIOUS DAY -

JANUARY 2021 FEEDER CATTLE FUTURES SETTLED ON DECEMBER 04, 2020 AT \$139.77

NATIONAL FEEDER & STOCKER SUMMARY - WEEK ENDING 12/04/2020

RECEIPTS:	Auctions	Direct	Video/Internet	Total
This Week:	278,600	34,500	60,000	373,100
Last Week:	112,300	35,300	1,600	149,200
Year Ago:	286,900	26,000	56,700	369,600

COMPARED TO TWO WEEKS AGO, STEERS AND HEIFERS SOLD UNEVEN; 2.00 LOWER TO 3.00 HIGHER. CALVES SUITABLE FOR GRAZING THAT ARE COMING OUT OF THE SOUTHEAST SHOWED THE MOST PRICE SUPPORT THIS WEEK AS AUCTIONS WERE BACK IN BUSINESS AFTER TAKING LAST WEEK OFF. YEARLINGS WERE STILL IN DEMAND, BUT AT A LOWER PRICE POINTS THAN BEFORE THE THANKSGIVING DAY HOLIDAY.

JANUARY 2021/MARCH 2021 FEEDER CATTLE SPREAD -

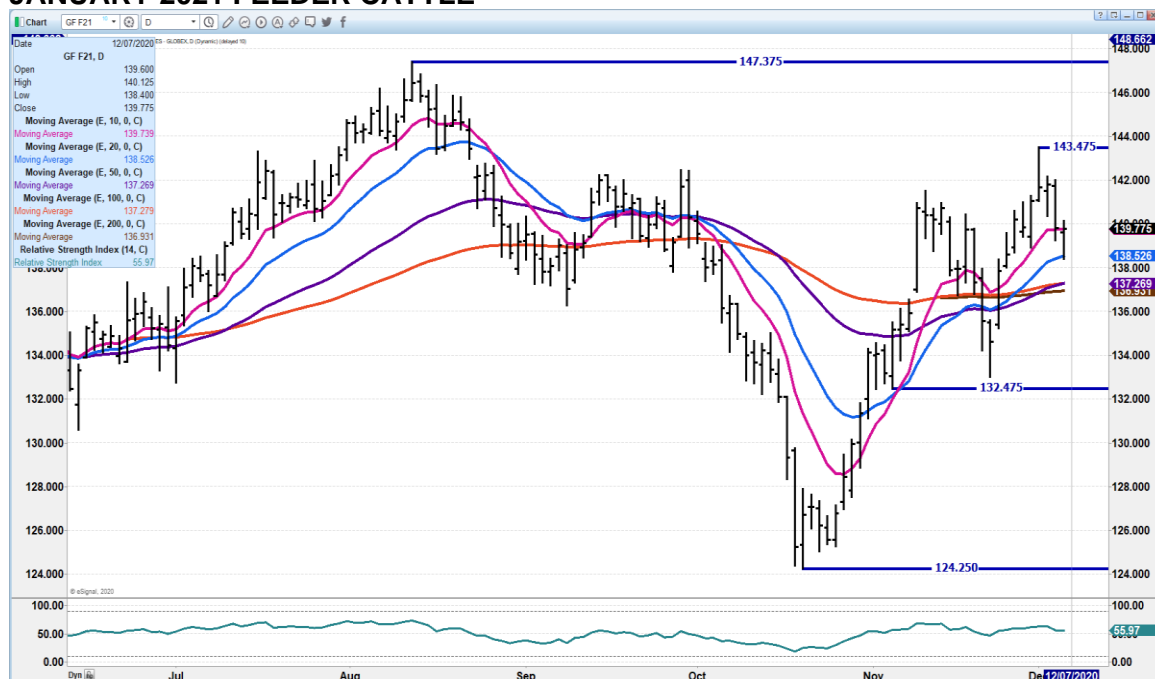




ADM Investor Services, Inc.



JANUARY 2021 FEEDER CATTLE –



LEAN HOGS

USDA ESTIMATED FEDERAL HOG SLAUGHTER

DECEMBER 04, 2020	491,000	
WEEK AGO	480,000	
YEAR AGO	488,000	
SATURDAY 12/05/2020	331,000-	A WEEK AGO 380,000 - YEAR AGO 330,000
WEEK TO DATE (EST)	2,789,000	
SAME PERIOD LAST WEEK (EST)	2,350,000	
SAME PERIOD LAST YEAR (ACT)	2,804,000	
2020 YEAR TO DATE	121,582,000	
2019 *YEAR TO DATE	120,673,000	

PERCENT CHANGE YEAR TO DATE .8% COMPARED TO PREVIOUS WEEK AT .8%

ADMIS.com | 312.242.7000 | Chicago | New York | London | Hong Kong | Singapore | Taipei | Shanghai

The information and comments contained herein is provided by ADM Investor Services, Inc. ("ADMIS") and NOT ADM. Futures and options trading involve significant risk of loss and may not be suitable for everyone. Therefore, carefully consider whether such trading is suitable for you in light of your financial condition. This report includes information from sources believed to be reliable and accurate as of the date of this publication, but no independent verification has been made and we do not guarantee its accuracy or completeness. Research analyst does not currently maintain positions or have financial interest in the commodities specified within this report. Any reproduction or retransmission of this report without the express written consent of ADM Investor Services, Inc. is strictly prohibited. Again, the information and comments contained herein is provided by ADMIS and in no way should be construed to be information provided by ADM. Copyright © ADM Investor Services, Inc.



=====

CME CASH HOG INDEX 12/02/2020 AT 66.55 DOWN 16 CENTS FROM PREVIOUS DAY

CME CASH PORK CUTOUT INDEX 12/03/2020 AT 7842 DOWN 43 CENTS FROM PREVIOUS DAY

CME CASH FRESH BACON INDEX ON 11/27/2020 WAS 123.40 COMPARED TO 11/20/2020 WAS 126.49

=====

For the week, the pork carcass cutout was down 1.79. Loins closed at 69.76 and were down 3.72.. Hams were 88.03 up 5.60 Bellies were 93.30 up 2.61. Butts were down hard losing 12.71, picnics tumbled 11.23 and ribs were off 2.79. Hams and bellies helped with export market but big slaughter, weights increasing this month and prospects of increasing global hog market weighing on hog prices

=====

Flush with cash, Chinese hog producer builds world's largest pig farm

<https://news.trust.org/item/20201207042516-4pmb8/>

=====

2020 year to date hog slaughter is close to 1% above 2019. Packers seem to have worked out problems when employees are sick with extra employees trained to work several stations in the plant. Packers have increased the nursing staff in plants and processing facilities. Clinics are on site to work with employees when ill. More robotics are used. Some packers are testing for COVID 19 and some are temperature testing when employees come to work and spot testing throughout the day. Break time and when employees take time to eat have scheduled to allow more social distancing.

Packers and unions are pushing for employees to be near the top of the list when vaccinations become readily available because employees were not only considered "essential" workers but are working under the Defense Protection Act.

=====

USDA MARKET NEWS

Based on negotiated prices and volume of pork cuts delivered within 14 days and on average industry cutting yields.

Calculations for 215 lb Pork Carcass. 55-56% lean, 0.55"-0.70" BF Last Rib



NATIONAL DAILY PORK REPORT FOB PLANT - NEGOTIATED SALES

DECEMBER 04, 2020

LOADS OF PORK CUTS: 304.24

LOADS TRIM/PROCESSED PORK: 43.61

FINAL

Date	Loads	Carcass	Loin	Butt	Pic	Rib	Ham	Belly
12/04/2020	347.84	78.17	69.76	66.65	62.98	132.42	88.03	93.30
CHANGE :		1.72	-2.75	2.28	0.30	0.67	8.82	0.26
Five Day Average --		78.33	71.61	70.07	63.12	131.36	83.25	96.75

FINAL PREVIOUS WEEK'S CLOSE

Date	Loads	Carcass	Loin	Butt	Pic	Rib	Ham	Belly
11/27/2020	214.07	79.96	73.48	79.26	74.21	135.21	82.43	90.69

**NATIONAL DAILY DIRECT HOG PRIOR DAY REPORT - SLAUGHTERED SWINE
SLAUGHTER DATA FOR DECEMBER 3, 2020**

Average live weight - 289.89

Average carcass - 216.71

**DAILY DIRECT HOGS PLANT DELIVERED AS OF 1:30 PM DECEMBER 4, 2020
NATIONAL NEGOTIATED PURCHASE BASE CARCASS PRICES**

Carcass Base Price: \$50.00 - \$58.50

Weighted Average: \$55.81

Change from Prior Day: 46 lower

HOGS SOLD: 7,508

SWINE OR PORK MARKET FORMULA PURCHASE (Including Packer Sold)

PRICE RANGE: \$55.15 - \$75.36

Weighted Average: \$64.16

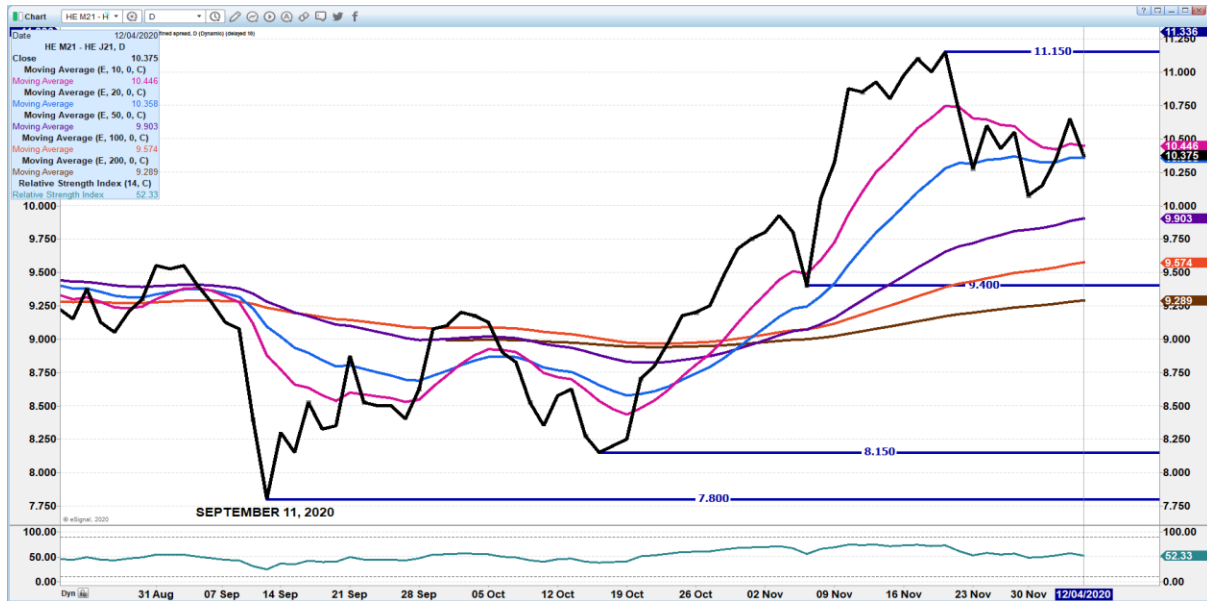
Previous Day: \$65.85

HOGS SOLD: 182,143

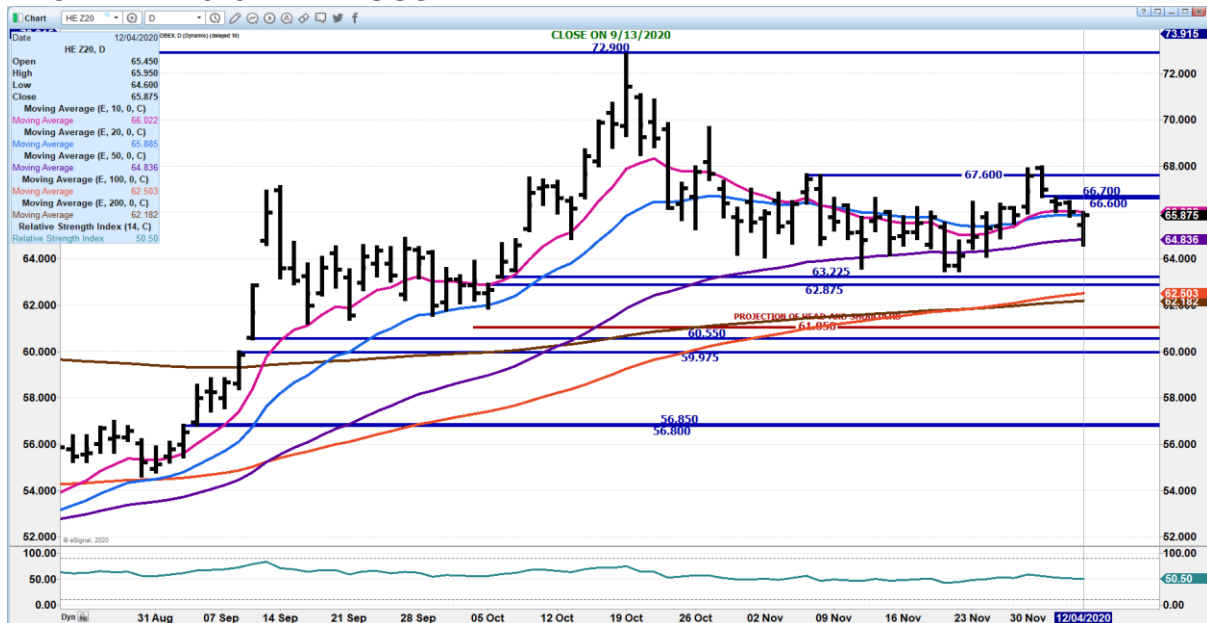
https://www.ams.usda.gov/mnreports/lm_hq203.txt



JUNE/APRIL LEAN HOG SPREAD –



DECEMBER 2020 LEAN HOGS –



ADMIS.com | 312.242.7000 | Chicago | New York | London | Hong Kong | Singapore | Taipei | Shanghai

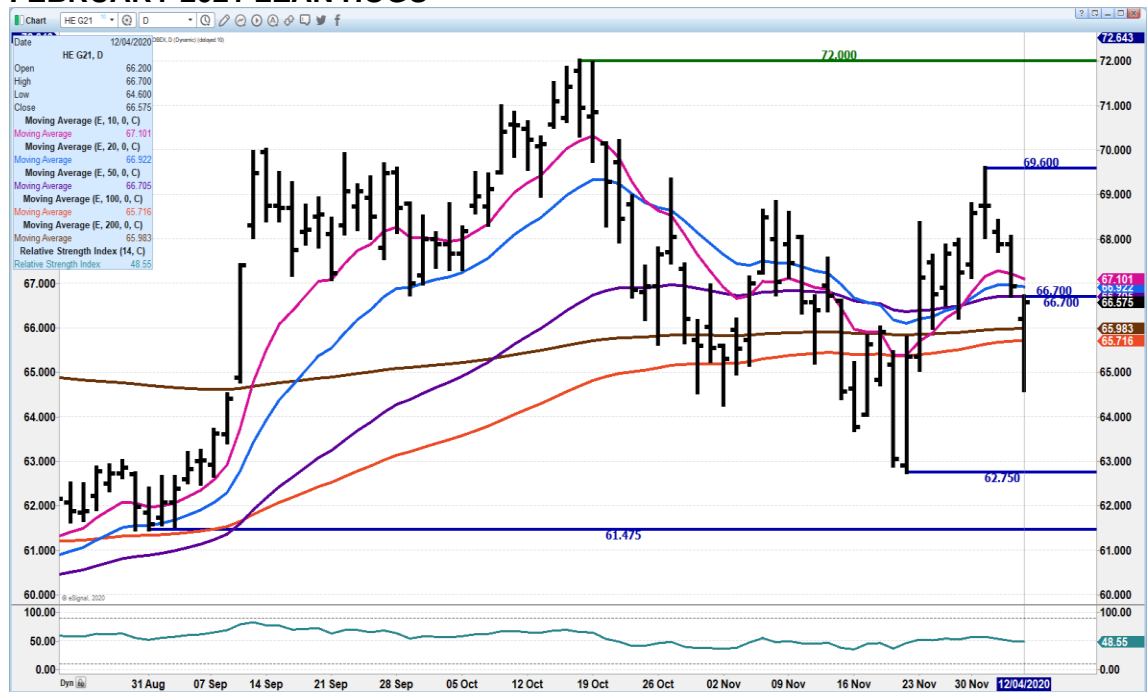
The information and comments contained herein is provided by ADM Investor Services, Inc. ("ADMIS") and NOT ADM. Futures and options trading involve significant risk of loss and may not be suitable for everyone. Therefore, carefully consider whether such trading is suitable for you in light of your financial condition. This report includes information from sources believed to be reliable and accurate as of the date of this publication, but no independent verification has been made and we do not guarantee its accuracy or completeness. Research analyst does not currently maintain positions or have financial interest in the commodities specified within this report. Any reproduction or retransmission of this report without the express written consent of ADM Investor Services, Inc. is strictly prohibited. Again, the information and comments contained herein is provided by ADMIS and in no way should be construed to be information provided by ADM. Copyright © ADM Investor Services, Inc.



ADM Investor Services, Inc.



FEBRUARY 2021 LEAN HOGS –



CHARTS FROM ESIGNAL INTERACTIVE, INC.

ADMIS.com | 312.242.7000 | Chicago | New York | London | Hong Kong | Singapore | Taipei | Shanghai

The information and comments contained herein is provided by ADM Investor Services, Inc. ("ADMIS") and NOT ADM. Futures and options trading involve significant risk of loss and may not be suitable for everyone. Therefore, carefully consider whether such trading is suitable for you in light of your financial condition. This report includes information from sources believed to be reliable and accurate as of the date of this publication, but no independent verification has been made and we do not guarantee its accuracy or completeness. Research analyst does not currently maintain positions or have financial interest in the commodities specified within this report. Any reproduction or retransmission of this report without the express written consent of ADM Investor Services, Inc. is strictly prohibited. Again, the information and comments contained herein is provided by ADMIS and in no way should be construed to be information provided by ADM. Copyright © ADM Investor Services, Inc.