



## TUESDAY MORNING JANUARY 12, 2021 LIVESTOCK REPORT

by Chris Lehner | 312.242.7942 | [chris.lehner@admis.com](mailto:chris.lehner@admis.com)

### CATTLE

#### USDA FEDERAL CATTLE SLAUGHTER

JANUARY 11 , 2021	119,000
WEEK AGO	112,000
YEAR AGO	122,000

=====

	CHOICE	SELECT
BOXED BEEF FINAL	207.69	195.74
CHANGE FROM PRIOR DAY	0.89	(0.95)
CHOICE/SELECT SPREAD:		11.95
TOTAL LOAD COUNT		123
5 DAY SIMPLE AVERAGE:	206.73	196.48

=====

Based on negotiated prices and volume of boxed beef cuts delivered within 0-21 days and on average industry cutting yields. Values reflect U.S. dollars per 100 pounds

#### FINAL JANUARY 11, 2021

Primal Rib	330.72	287.54
Primal Chuck	187.10	175.20
Primal Round	181.65	182.43
Primal Loin	256.91	39.90
Primal Brisket	157.77	156.08
Primal Short Plate	117.61	117.61
Primal Flank	96.83	97.37

#### FINAL JANUARY 8, 2021

Primal Rib	329.98	285.90
Primal Chuck	184.14	179.34
Primal Round	182.38	182.42
Primal Loin	257.82	242.16
Primal Brisket	156.13	150.47
Primal Short Plate	115.30	115.30
Primal Flank	95.66	93.93



=====

**LOAD COUNT AND CUTOFF VALUE SUMMARY**

Date	Choice	Select	Trim	Grinds	Total	CHOICE 600-900	SELECT 600-900
01/08	93	25	6	14	138	206.80	196.69
01/07	112	21	14	28	176	205.81	196.59
01/06	125	47	13	19	204	205.27	196.08
01/05	135	25	13	31	204	205.90	196.49
01/04	60	20	8	14	102	209.87	196.53
12/31	87	34	11	12	144	209.35	194.97

=====

**NATIONAL BOXED BEEF CUTS - NEGOTIATED SALES** FOB Plant basis negotiated sales for delivery within 0-21-day period. Prior days sales after 1:30pm are included.  
**CURRENT VOLUME - (one load equals 40,000 pounds)**

Choice Cuts	75.74 loads	3,029,489 pounds
Select Cuts	22.07 loads	882,772 pounds
Trimming	5.83 loads	233,075 pounds
Ground Beef	19.61 loads	784,563 pounds

**USDA BY-PRODUCT DROP VALUE (STEER) FOB CENTRAL U.S.**  
[HTTPS://WWW.AMS.USDA.GOV/MNREPORTS/NW\\_LS441.TXT](https://www.ams.usda.gov/mnreports/nw_ls441.txt)

**USDA POSTED CATTLE PRICES ON 01/11/2021**  
IA/MN – CASH – 109.00 - 110.00 507 HEIFERS Dressed.- No Reportable Trade  
NE - CASH – No Reportable Trade Dressed. No Reportable Trade  
KS – CASH No Reportable Trade DRESSED No Reportable Trade  
TX/OK/NM – No Reportable Trade.  
CO – No Reportable Trade.

**\*\*\*National Daily Direct Cattle 01/11/2021**  
**5 day accumulated weighted avg)**

	Weight	Price	Head
Live Steer:	1492	\$111.17	22,503
Live Heifer:	1308	\$111.51	11,359
Dressed Steer:	968	\$175.81	18,614
Dressed Heifer:	861	\$175.83	5,931

=====



**Weights remain heavy.. Heavy cattle are keeping a lid on prices. On 651,000 head, last week's slaughter, and dressed beef 8 pounds more than a year ago that equates to 5,208,000 pounds or approximately 130 extra loads of beef. From the cattle producer's point of view and especially feedlots that are keeping the cattle on feed extra days, they are not doing themselves any good.**

**COVID 19 vaccinations are nowhere near where they thought they would be. The US is breaking records on the number of people with COVID 19 and with news fewer people are working, it is going to take a while before people go out or for many that can afford to buy high end cuts. Export competition is going to tough in 2021.**

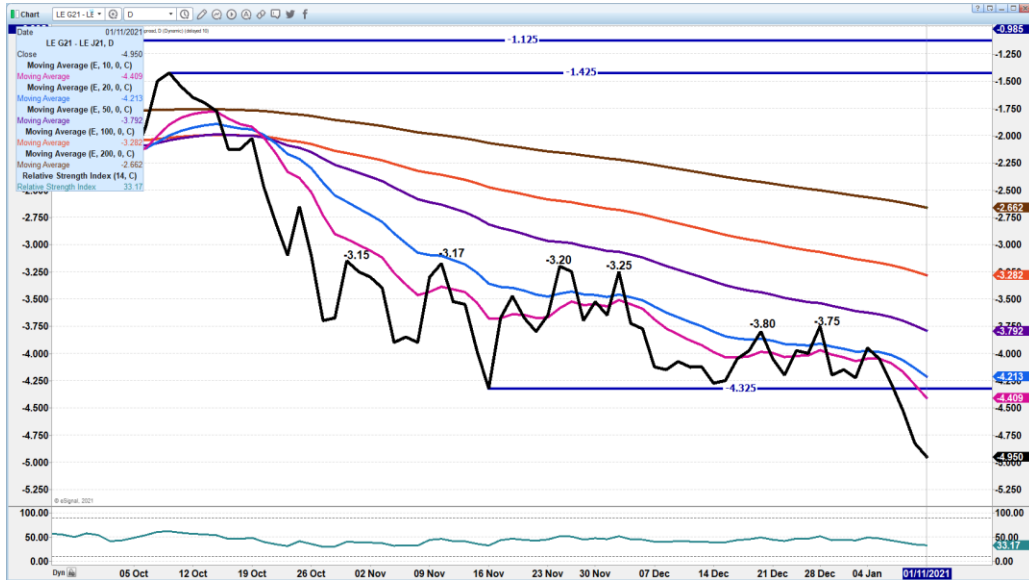
**Primal Choice rib and loin sections are the anchor hold down the beef market.. There was good movement of rib sections for the November and December holidays but a week before Christmas, rib sections began their decline. High priced cuts need retail buying. There is enough mid and low end beef selling and plenty of beef available as fabricators grind most other Choice cuts along with Select. Top it off with overweight cattle and beef imported to the US, unless Choice rib and loin sections move higher, it is hard to see price improvement over the next two to three months. Normally, January and February are not active times when consumers buy high priced cuts as they pay higher utility bills, and pay off credit cards form December.**

=====

**As of January 5, 2021, dressed steer and heifer weights were 890.1 compared to previous week at 886.3 up 3.8 pounds from week ago and the same as last week, 8 pounds over a year ago. Grading percent was 82.3%, down compared to previous week at 82.8 %.**

=====

**FEBRUARY 2021 LIVE CATTLE/APRIL 2021 LIVE CATTLE SPREAD – BEAR SPREADING CONTINUES**



**APRIL/JUNE 2021 LIVE CATTLE SPREAD - HIGHER BACK MONTHS ADVANTEGEUS FOR HEDGERS WHEN SPREADERS ROLL, BACK MONTHS FALL**





**FEBRUARY 2021 LIVE CATTLE – Good volume 35151 Found support at 100 day moving averages at 112.90 on Tuesday, next support at 110.55. resistance at 114.00 to 114.30**

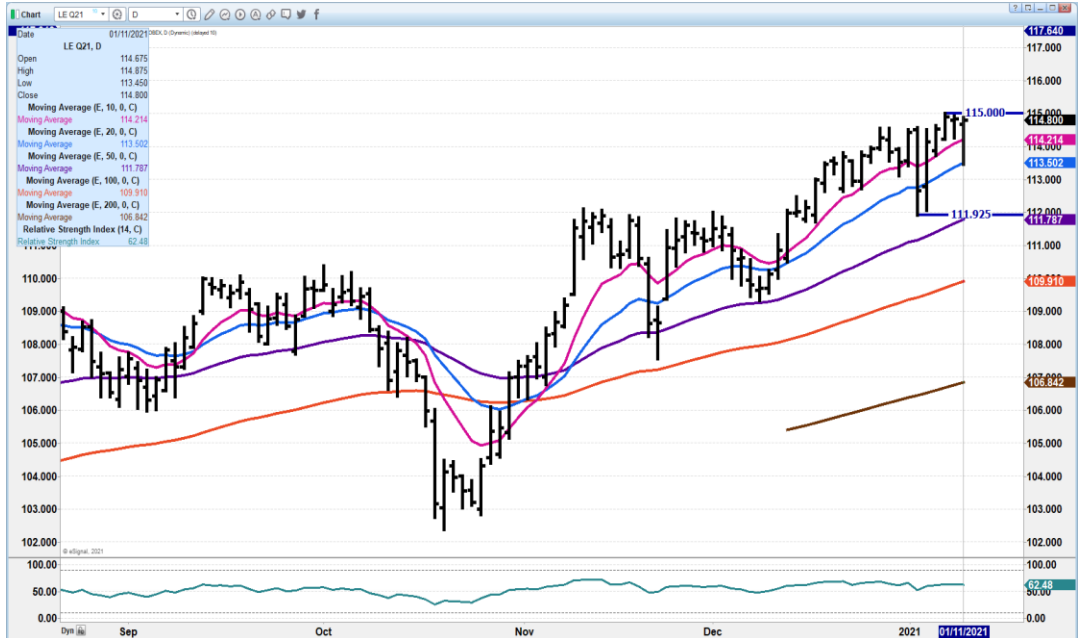


**APRIL 2021 LIVE CATTLE - NEXT SUPPORT AT 117.20 TO 115.87 RESISTANCE AT 118.70 TO 120.17 VOLUME INCREASING AS FUNDS ENDING ROLL 33,616 VOLUME ON MONDAY**





**AUGUST 2021 LIVE CATTLE – BOUNCING AGAINST CONTRACT HIGHS. 115.00 TO 116.37 SUPPORT AT 113.50 TO 111.92**



**Feeder Cattle**

**THE CME FEEDER INDEX ON 01/08/2020 WAS 136.16 UP 53 FROM PREVIOUS DAY -**

**JANUARY 2021 FEEDER CATTLE FUTURES SETTLED ON JANUARY 11 2021 AT \$136.00**

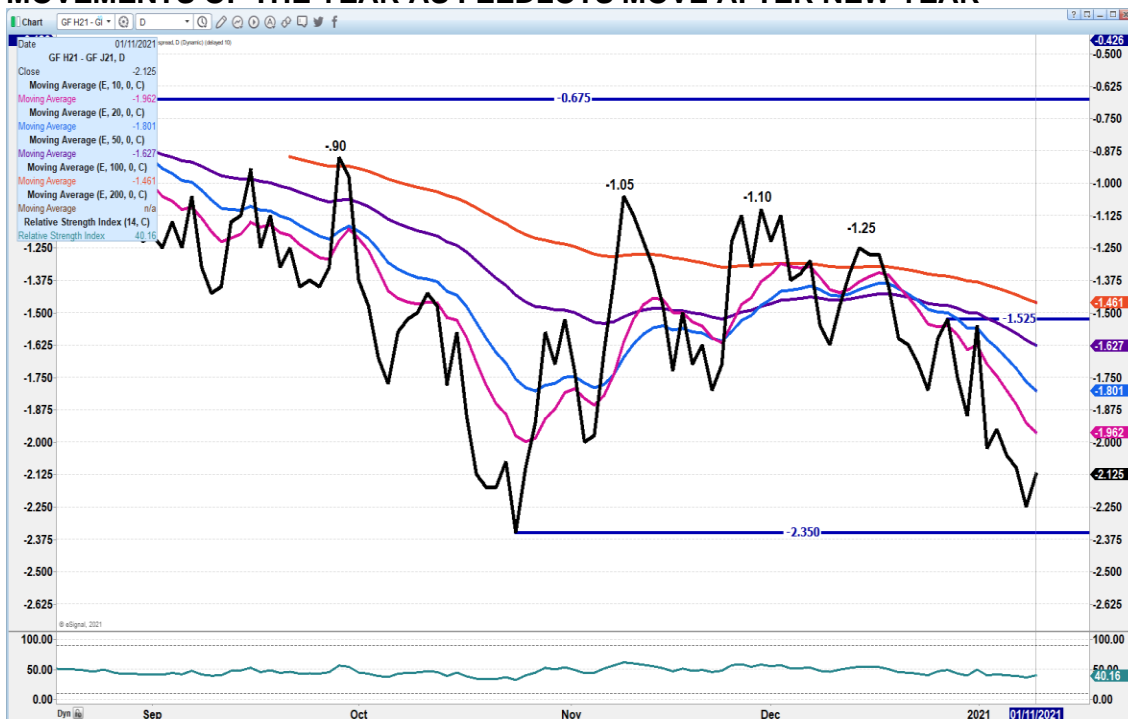
**NATIONAL FEEDER & STOCKER CATTLE SUMMARY – WEEK ENDING 01/09/2021**

RECEIPTS:	AUCTIONS	DIRECT	VIDEO/INTERNET	TOTAL
<b>THIS WEEK:</b>	<b>349,800</b>	<b>40,300</b>	<b>15,700</b>	<b>405,800</b>
<b>LAST WEEK:</b>	<b>0</b>	<b>0</b>	<b>0</b>	<b>0</b>
<b>YEAR AGO:</b>	<b>377,500</b>	<b>59,900</b>	<b>94,300</b>	<b>531,700</b>



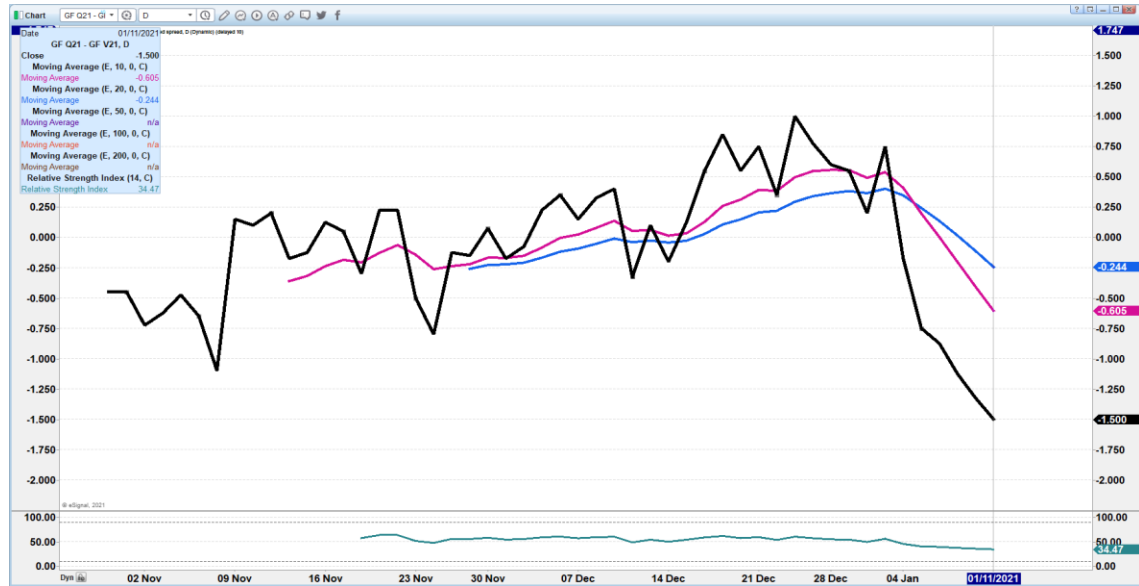
**NO RECENT PRICE COMPARISON NATIONWIDE FOR WEEK ENDING JANUARY 9 DUE TO TWO FULL WEEKS OF AUCTIONS BEING ON LIMITED SCHEDULING OR COMPLETELY CLOSED IN OBSERVANCE OF THE CHRISTMAS AND NEW YEARS HOLIDAY. DEMAND WAS REPORTED AS GOOD THROUGHOUT THE NATION THE FIRST FULL MARKETING WEEK OF 2021. THE FIRST FULL WEEK OF THE YEAR IS TYPICALLY THE LARGEST VOLUME WEEK OF THE YEAR AND THIS HAS BEEN NO EXCEPTION WITH A HEAVY SUPPLY OF CATTLE COVERING THE ENTIRE WEIGHT SPECTRUM. MANY PRODUCERS HOLD THEIR CALF CROP UNTIL THE FIRST WEEK OF THE YEAR TO SELL AND THIS YEAR WAS NO DIFFERENT. THERE WILL UNDOUBTEDLY BE ANOTHER OVERALL, WEATHER CONDITIONS WERE FAVORABLE FOR TRANSPORTING CATTLE AND AUCTIONS RAN LONGER THAN NORMAL AT MOST LOCATIONS.**

**=====**  
**MARCH 2021/APRIL 2021 FEEDER CATTLE SPREAD - SPREADING IS WIDENING. SHOWING LACK OF BIG FEEDLOT BUYING EXTRA. LAST WEEK ONE OF BIGGEST MOVEMENTS OF THE YEAR AS FEEDLOTS MOVE AFTER NEW YEAR**

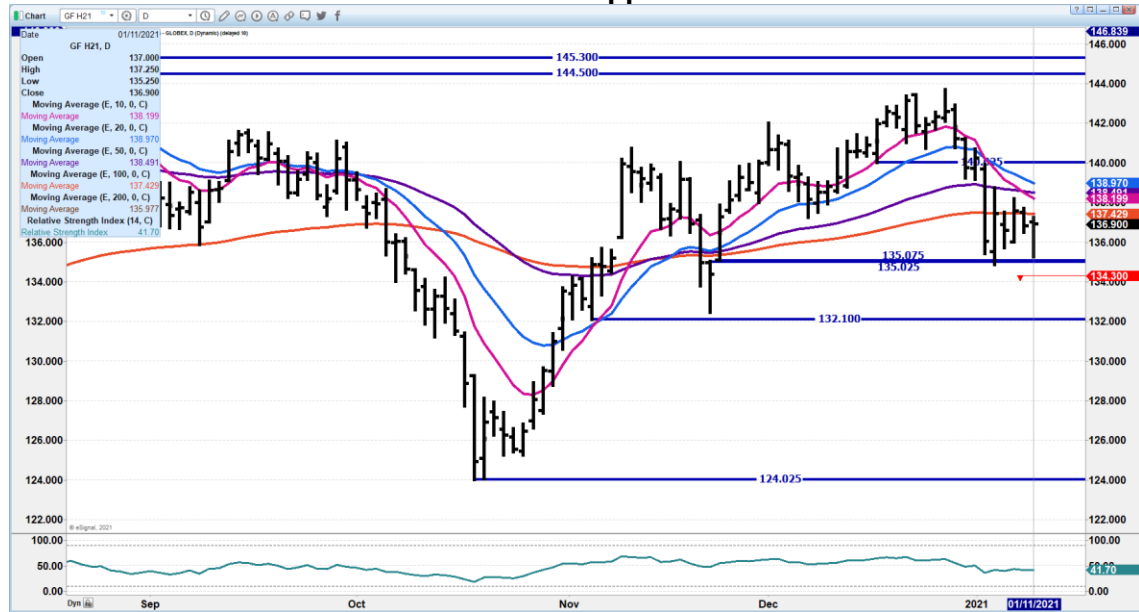




**AUGUST/OCTOBER FEEDER CATTLE SPREAD. GETTING A BIT OVER SOLD COULD BOUNCE TO 10 DAY MOVING AVERAGE AND THEN PLACE TRADE**



**MARCH 2021 FEEDER CATTLE – 134.40 support resistance at 138**







**APRIL 2021 FEEDER CATTLE – support at 136.60 resistance at 140.15**



**LEAN HOGS**

**USDA ESTIMATED FEDERAL HOG SLAUGHTER**  
**JANUARY 11, 2021            498,000**  
**WEEK AGO                      490,000**  
**YEAR AGO                      496,000**

=====

**CME CASH HOG INDEX 01/7/2021 AT 63.34 UP 38 CENTS FROM PREVIOUS DAY**

**CME CASH PORK CUTOUT INDEX 01/08/2021 AT 78.68 UP 42 CENTS FROM PREVIOUS DAY**

**CME CASH FRESH BACON INDEX ON 01/08/2021 WAS 153.92 COMPARED TO 01/01/2021 WAS 123.79**

=====

**CHINA TO SELL 30,000 TONNES OF FROZEN PORK FROM STATE RESERVES**



<https://www.reuters.com/article/china-pork-reserves-idUSB9N2CW045>

It is not unusual at this time of the year that China moves pork out of reserves from previous purchases, sold for the New Year holiday and then refreshed with fresh frozen pork to refresh stocks. Under the best conditions stocks need to be rotated, out with the old and in with the new.

=====

Pork carcass is seeing improvement with boost in ham prices. It is likely Mexico is once again taking exports after a couple of weeks of slowing down around Christmas. Fresh hams are cheap. Loins are very cheap, but hams have more fat and when trimmed out, and more desirable for exports.

Futures trading on Monday was moderate as specs spread, selling February and buying April and selling April and buying June. Summer month hogs are high because China used to farrow fewer winter pigs and there would be a gap but demand for pork stayed strong. But with growth in year round farrowing, it is very likely this year the gap won't be there. African Swine Fever wiped out a lot of hogs for two years, but now it has transformed their pork industry.

At \$40/head packers are making a lot of money and want to kill as many hogs as possible. Weights indicate packers aren't fighting over hogs. Average weights are up to 294 pounds live and dressed at 221.

=====

**USDA MARKET NEWS**

Based on negotiated prices and volume of pork cuts delivered within 14 days and on average industry cutting yields.  
Calculations for 215 lb. Pork Carcass. 55-56% lean, 0.55"-0.70" BF Last Rib

**NATIONAL DAILY PORK REPORT FOB PLANT - NEGOTIATED SALES**

**JANUARY 11, 2021**

**LOADS OF PORK CUTS: 335.72**

**LOADS TRIM/PROCESSED PORK: 41.45**

**FINAL**

Date	Loads	Carcass	Loin	Butt	Pic	Rib	Ham	Belly
01/11/2021	377.17	83.38	72.36	71.33	48.08	148.56	85.25	129.63
Change		2.38	0.41	2.39	-5.18	0.48	13.02	-2.15
Five Day Average --		79.90	72.98	71.00	48.04	147.70	70.98	128.58
Final								



Date	Loas	Carcass	Loin	Butt	Pic	Rib	Ham	Belly
01/08/2021	338.15	81.00	71.95	68.94	53.26	148.08	72.23	131.78
Change		1.18	-2.35	-0.95	2.21	0.95	5.53	-0.03
Five Day Average --		78.77	73.33	71.37	47.38	147.01	67.62	126.63

=====

**NATIONAL DAILY DIRECT HOG PRIOR DAY REPORT - SLAUGHTERED SWINE**  
**Slaughter Data for Friday, January 8, 2021 and Saturday, January 9, 2021**  
 Average live weight - 293.82  
 Average carcass - 220.87

=====

**DAILY DIRECT AFTERNOON HOG REPORT JANUARY 08, 2021**

**National Negotiated Carcass Price**  
 Lowest price: 44.00  
 Highest price: 56.07  
 Weighted Average Price: 55.52  
 Head Count: 3,040

**Other Market Formula (Carcass)**  
 Lowest base price: 52.92  
 Highest base price: 76.57  
 Weighted Average Price: 64.69  
 64.25Head Count: 237,232

**Swine/Pork Market Formula (Carcass)**  
 Lowest base price: 52.35  
 Highest base price: 75.39  
 Weighted Average Price: 63.01  
 64.25Head Count: 191,236

**Other Purchase Arrangement (Carcass)**  
 Lowest base price: 57.96  
 Highest base price: 93.46  
 Weighted Average Price: 72.73  
 Head Count: 182,304

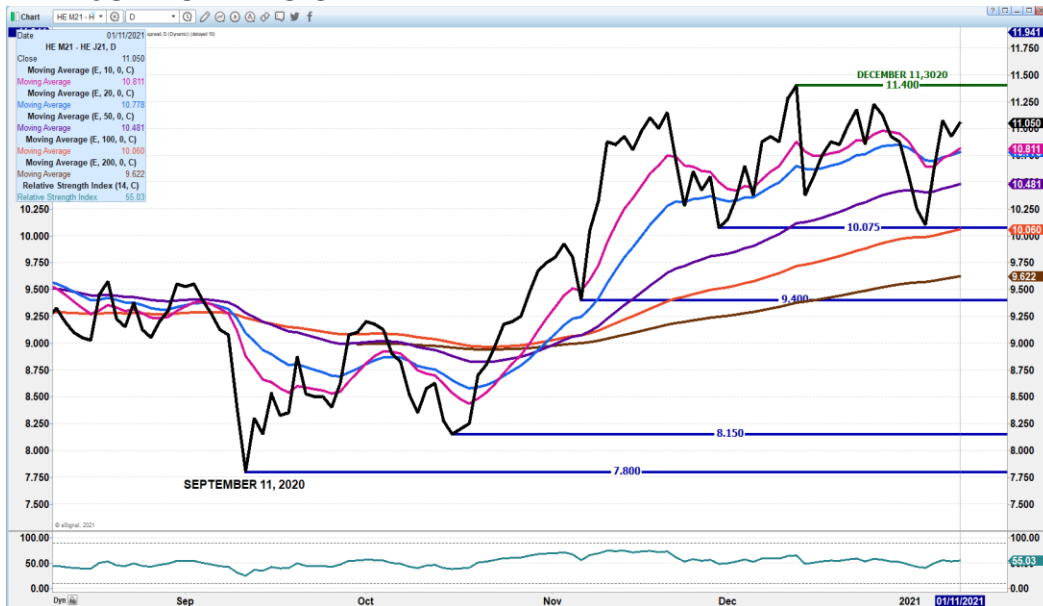
=====



**FEBRUARY/APRIL 2021 LEAN HOG SPREAD - WIDENING COULD SEE A BOUNCE TO MINUS 3.87 TO MINUS 3.67**



**JUNE/APRIL LEAN HOG SPREAD – SPREAD NORMALLY WIDENS THIS TIME OF YEAR WITH JUNE GAINING ON APRIL**





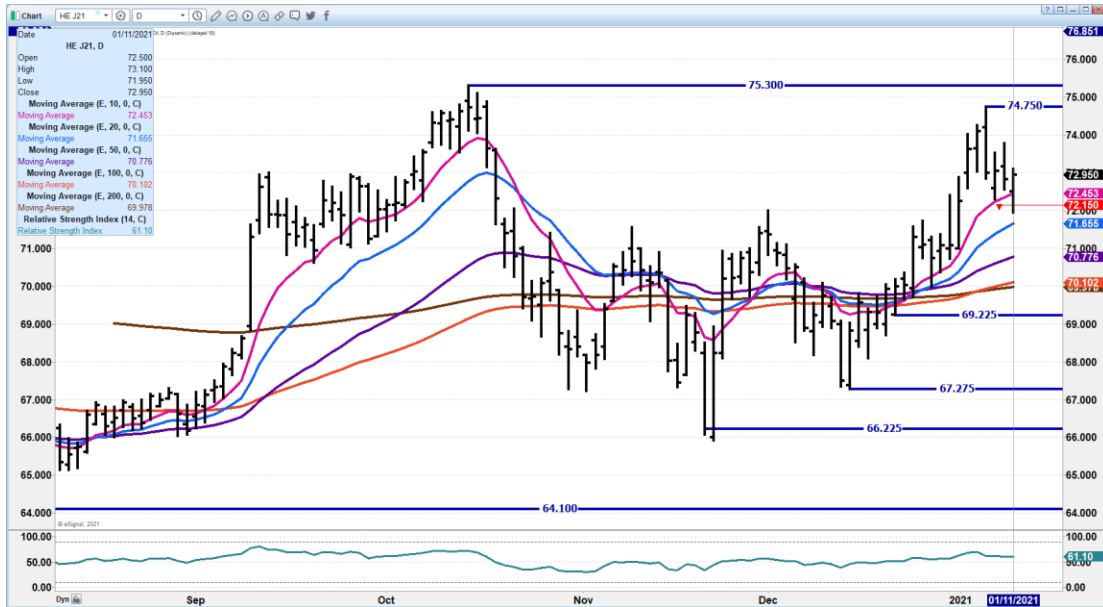
ADM Investor Services, Inc.



### FEBRUARY 2021 LEAN HOGS – NEEDS TO HOLD MONDAY’S LOW AT 67.95 NEXT SUPPORT AT 67.00 RESISTANCE AT 68.80 TO 69.87



### APR 2021 LEAN HOGS – RESISTANCE AT 74.10 TO 74.75 SUPPORT AT 72.45 TO 71.65



ADMIS.com | 312.242.7000 | Chicago | New York | London | Hong Kong | Singapore | Taipei | Shanghai

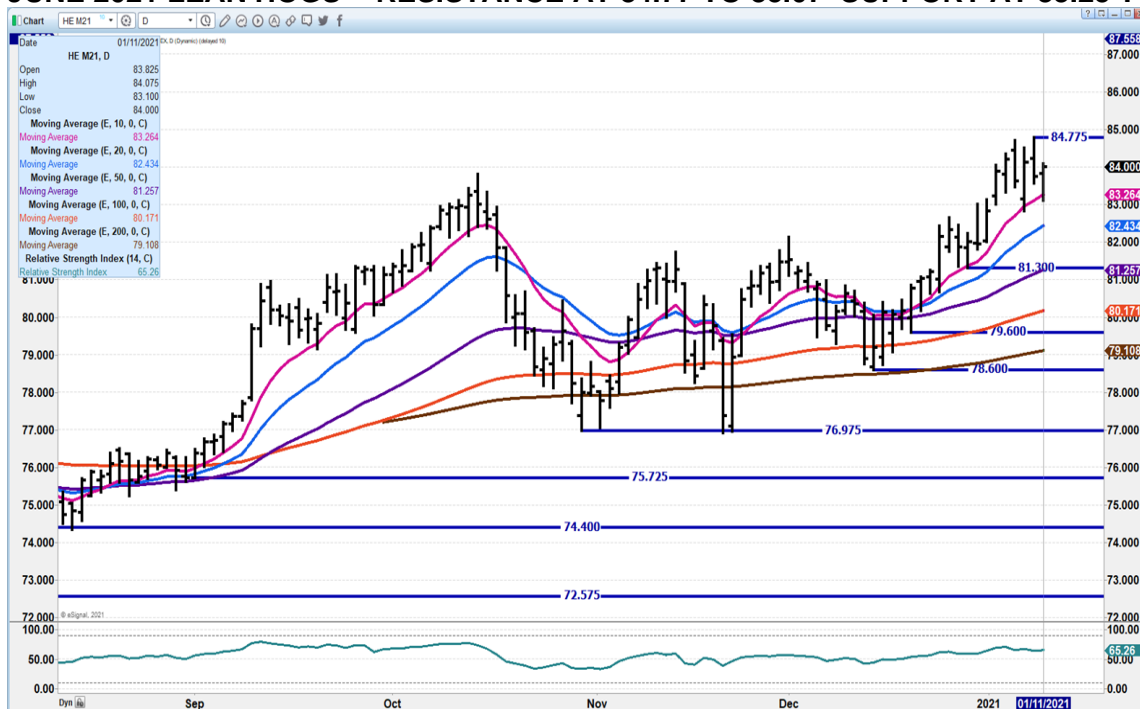
The information and comments contained herein is provided by ADM Investor Services, Inc. (“ADMIS”) and NOT ADM. Futures and options trading involve significant risk of loss and may not be suitable for everyone. Therefore, carefully consider whether such trading is suitable for you in light of your financial condition. This report includes information from sources believed to be reliable and accurate as of the date of this publication, but no independent verification has been made and we do not guarantee its accuracy or completeness. Research analyst does not currently maintain positions or have financial interest in the commodities specified within this report. Any reproduction or retransmission of this report without the express written consent of ADM Investor Services, Inc. is strictly prohibited. Again, the information and comments contained herein is provided by ADMIS and in no way should be construed to be information provided by ADM. Copyright © ADM Investor Services, Inc.



ADM Investor Services, Inc.



### JUNE 2021 LEAN HOGS - RESISTANCE AT 84.77 TO 85.07 SUPPORT AT 83.25 TO 82.45



CHARTS FROM ESIGNAL INTERACTIVE, INC.

**Christopher Lehner**

312 242 7942

913.787.6804

ADMIS.com | 312.242.7000 | Chicago | New York | London | Hong Kong | Singapore | Taipei | Shanghai

The information and comments contained herein is provided by ADM Investor Services, Inc. ("ADMIS") and NOT ADM. Futures and options trading involve significant risk of loss and may not be suitable for everyone. Therefore, carefully consider whether such trading is suitable for you in light of your financial condition. This report includes information from sources believed to be reliable and accurate as of the date of this publication, but no independent verification has been made and we do not guarantee its accuracy or completeness. Research analyst does not currently maintain positions or have financial interest in the commodities specified within this report. Any reproduction or retransmission of this report without the express written consent of ADM Investor Services, Inc. is strictly prohibited. Again, the information and comments contained herein is provided by ADMIS and in no way should be construed to be information provided by ADM. Copyright © ADM Investor Services, Inc.